

Key figures

PERFORMANCE (C EUR SHARE)

MTD (Month to Date)	+0.10%
YTD (Year to Date)	-4.02%

FUND SIZE

EUR 589.57m

NET ASSET VALUE PER UNIT

C EUR share	EUR 1,930.96
C CHF hedged share	CHF 1,453.31
C USD hedged share	USD 1,388.93

Financial data

NUMBER OF LINES/ISSUERS
260 / 184

NUMBER OF SECTORS¹
33

% MARKET EXPOSURE
97.69%

THEORETICAL BETA
1.03

AVERAGE RATING²
BB- (fund) / BB- (index)

MODIFIED DURATION
3.53 (fund) / 3.66 (index)

OPTION ADJUSTED SPREAD (OAS)
423bps (fund) / 410bps (index)

AVERAGE YIELD TO WORST
4.52% (fund) / 4.33% (index)

AVERAGE YIELD TO MATURITY
4.57% (fund) / 4.33% (index)

¹ Bloomberg sectors

² Based on the worst rating from S&P and Moody's

MORNINGSTAR CATEGORY

EUR High Yield Bonds



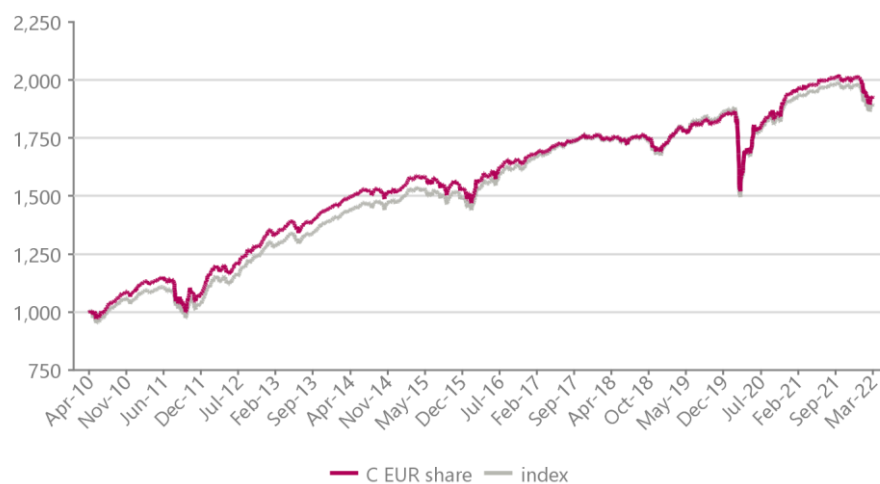
Investment strategy and fund's objective

SCOR Sustainable Euro High Yield is a French FCP invested in Euro denominated high yield bonds. The fund's investment objective is to achieve a performance greater or equal to the "Bloomberg Euro High Yield 3% Issuer Constraint ex financial TR unhedged" index, less management costs with net coupons reinvested, over the recommended investment period, while integrating Environmental, Social and Governance (ESG) criteria.

Key points:

- a diversified portfolio that promotes the generation of cash flows
- investments in Euro denominated securities only
- no investments in bonds issued by financial institutions, nor investments in credit derivatives
- at least 90% of assets in the portfolio benefit from an ESG rating
- the fund does not possess any ISR label

NAV since inception (basis 1,000)³



Cumulative performance

	YTD	1 month	3 months	1 year	3 years	inception*
C EUR share	-4.02%	+0.10%	-4.02%	-2.01%	+8.79%	+93.10%
Index	-4.09%	+0.23%	-4.09%	-2.23%	+6.86%	+89.71%
C CHF hedged share	-4.15%	+0.04%	-4.15%	-2.33%	+7.55%	+45.33%
C USD hedged share	-3.74%	+0.24%	-3.74%	-1.23%	+13.62%	+38.89%

Calendar performance

	YTD 2022	2021	2020	2019	2018	2017
C EUR share	-4.02%	+3.60%	+4.86%	+8.85%	-3.12%	+5.08%
Index	-4.09%	+3.58%	+2.33%	+10.77%	-3.85%	+6.19%
C CHF hedged share	-4.15%	+3.35%	+4.45%	+8.27%	-3.63%	+4.60%
C USD hedged share	-3.74%	+4.29%	+6.42%	+9.16%	-0.44%	+7.15%

Annualized performance

	3 years	5 years	10 years	inception*
C EUR share	+2.84%	+2.68%	+4.93%	+5.65%
Index	+2.23%	+2.47%	+5.14%	+5.50%
C CHF hedged share	+2.45%	+2.24%	-	+4.03%
C USD hedged share	+4.34%	+4.11%	-	+4.29%

³ As of 08/02/2021, fund's investment strategy includes ESG criteria

Index = Bloomberg Euro High Yield 3% Issuer Constraint ex Financial TR Unhedged (Bloomberg code: I20845EU Index). Prior to 08/02/2021, the benchmark was "Barclays Euro High Yield ex Financials -3% Issuer Cap » (LEXFTREH Index)"

* Since inception of the share class (refer to characteristics)

Performance is net of fees, includes dividends and is based on net asset values adjusted to swing pricing. Past performance is not a reliable indicator of future performance.

Contact

SALES TEAM

Phone: +33 1 58 44 70 00
scorip.sales@scor.com
www.scor-ip.com

SCOR INVESTMENT PARTNERS

5, avenue Kléber
75795 Paris Cedex 16
France

SCOR SUSTAINABLE EURO HIGH YIELD

Monthly report – March 31, 2022

Top 10 exposures⁴

ISSUER	SECTOR	COUPON	MATURITY	%
BALL CORP	Packaging	4.38%	15/12/2023	2.72%
VALEO SA	Automotive	0.38%	12/09/2022	1.36%
TELEFONICA EUROP	Wirelines	2.88%	Perp	1.33%
LEVI STRAUSS & CO	Retailers	3.38%	15/03/2027	1.23%
INTERTRUST GROUP	Consumer Services	3.38%	15/11/2025	1.10%
RENAULT SA	Automotive	2.38%	25/05/2026	1.10%
VEOLIA	Utility Other	2.25%	Perp	1.07%
ARDAGH	Packaging	2.13%	15/08/2026	1.07%
FAURECIA	Automotive	3.75%	15/06/2028	1.06%
SOLVAY FINANCE	Chemicals	5.87%	Perp	1.02%

5 largest overexposures^{4,5}

ISSUER	SECTOR	OVER EXPOSURE	ESG RATING
BALL CORP	Packaging	2.13%	B
TELEFONICA	Wirelines	1.99%	B-
FAURECIA	Automotive	1.18%	C
BAYER AG	Pharmaceuticals	1.18%	C+
EDF	Electric	1.12%	C+

5 largest underexposures^{4,5}

ISSUER	SECTOR	UNDER EXPOSURE	ESG RATING
NETFLIX INC	Media Entertainment	-1.65%	D+
AUTOSTRADE	Transportation	-1.29%	C
EDP	Electric	-1.06%	B+
VERISURE	Consumer Services	-1.01%	C-
REPSOL INTL	Integrated	-0.98%	B-

Risk indicators

YEAR	VOLATILITY*		TRACKING ERROR	INFO. RATIO.	BETA
	FUND	INDEX			
Since inception	4.18%	4.18%	1.30%	0.12	0.94
YTD 2022	4.88%	4.94%	0.58%	0.46	0.96
2021	1.88%	1.35%	1.32%	0.01	1.07
2020	9.05%	9.81%	2.15%	1.18	0.89
2019	2.10%	2.41%	0.64%	-3.00	0.82
2018	2.12%	2.39%	0.58%	1.23	0.86
2017	1.11%	1.29%	0.45%	-2.46	0.79

*Based on weekly NAVs, the volatility of the Fund may not only reflect the volatility of the securities in the portfolio due to the application of the swing pricing mechanism.

⁴ % of the AuM

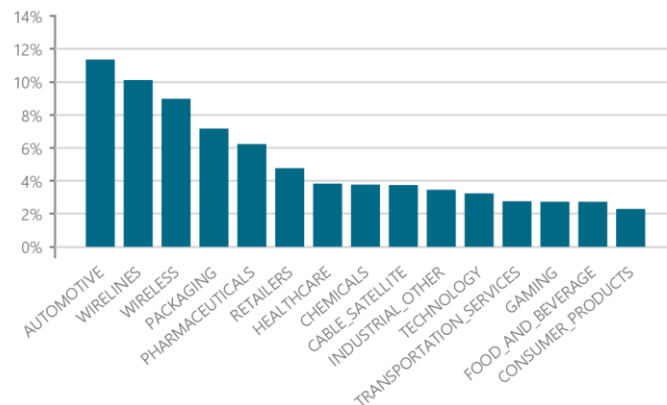
⁵ Refer to sustainable investment approach, on page 3

⁶ Bloomberg sectors

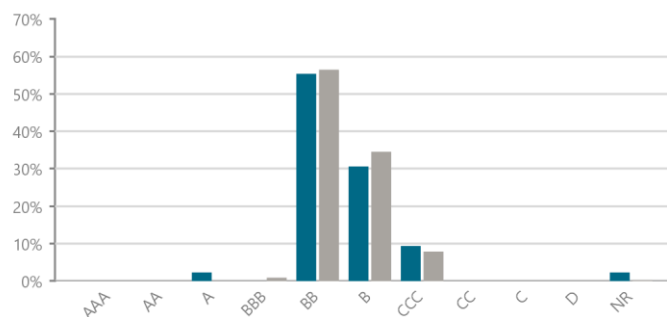
⁷ Source: Bloomberg

■ Fund
■ index = Bloomberg Euro High Yield 3% Issuer Constraint ex Financial TR Unhedged (Bloomberg code: I20845EU Index)

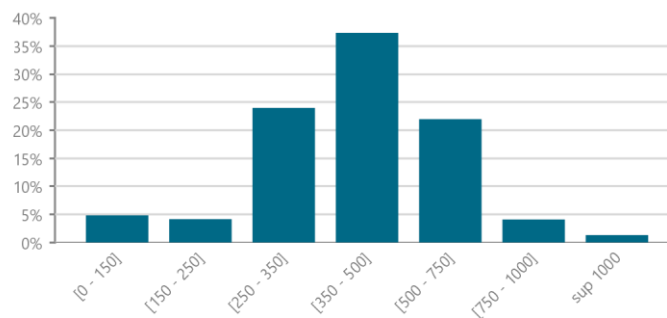
Top 15 sectors^{4,6}



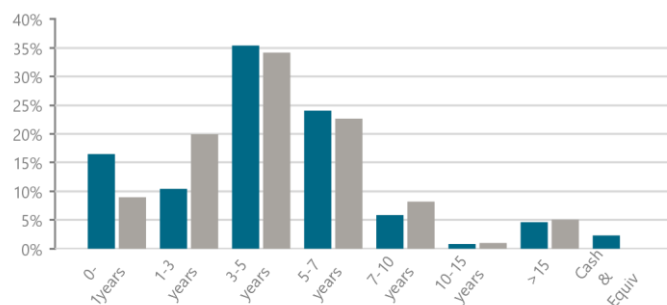
Breakdown by rating^{4,7}



Breakdown by OAS (in bps)⁴



Breakdown by maturity bucket⁴



Sustainable investment approach

The SCOR Sustainable Euro High Yield fund follows a sustainable investment process that contains normative and sectoral exclusions and ESG criteria. Through this extra-financial analysis, an ESG rating is assigned to issuers and potential new entries of the portfolio. Securities with an ESG rating will represent at least 90% of the net assets and an average ESG rating is established for each sub-universe of the portfolio. For each sub-universe, the portfolio's ESG rating needs to be superior to the ESG rating of its benchmark index after eliminating at least 20% of the worst performing issuers of said benchmark index. The fund also includes a "best in class" approach concerning four sectors with significant energy consumption: energy, utilities, automotive, and chemicals.

NORMATIVE AND SECTORIAL EXCLUSIONS

Normative exclusions:

- exclusions based on the recommendations of the Financial Action Task Force (FATF),
- exclusions based on the Office of Foreign Assets Control (OFAC) and the French Ministry of Finance,
- exclusions based on the Ottawa Convention and the Oslo Treaty,
- other exclusions based on international applications.

Sectoral exclusions:

- thermal coal business (coal mining, coal-fired power generation, coal plant development),
- oil & gas sector (oil sands, shale oil & gas, arctic oil, upstream, midstream, and downstream),
- tobacco manufacturers.

ESG RATING: ISSUER COVERAGE ^{8,9}

	Fund	Fund index
Issuers with ESG rating	99.75%	95.89%

⁸ In % of the fund's assets **excluding cash and monetary UCITS**. At least 90% of the fund's net assets need to possess an ESG rating.

⁹ Bloomberg Euro High Yield 3% Issuer Constraint ex Financials TR Unhedged (Bloomberg code: I20845EU Index).

ESG RATING PER SUB-UNIVERSE ^{10,11}

Sub-universe	Fund		Sub-universe
	% NAV	Rating	Index top 80%
Euro High Yield or unrated	97.69%	C	C
Euro Investment Grade	-	-	C+
Euro Sovereign	-	-	-

¹⁰ The benchmark indices corresponding to the three sub-universes are:

- Euro HY or NR: Bloomberg Euro High Yield ex Financials TR Unhedged (I20845EU);
- Euro Investment Grade: Bloomberg Euro Corporate ex Financials (LECFREU);
- Euro denominated Government Securities: Bloomberg-Barclays Euro Treasury 0-12 Months (LA09TREU)..

¹¹ Top 80% = benchmark index of the sub-universe after at least 20% of the lowest rated securities in that benchmark have been eliminated.

If the issuer of the security has an ESG rating from the non-financial data provider, the investment team assigns this rating to the security. If the issuer is not rated, the investment team assigns an ESG rating using an internal methodology consistent with that of the non-financial data provider. If no rating can be assigned, then the investment team will assign the NR (not rated) rating. The ESG rating is updated at least yearly.

The issuer's ESG Rating is based on a single ESG rating scale: ratings ranging from A to D-, with A being the highest possible rating, and D being eliminatory.

A	A-	B+	B	B-	C+	C	C-	D+	D	D-
---	----	----	---	----	----	---	----	----	---	----

The ESG rating range is based on a numerical score from 3.50 to 1.00. 3.50 is considered an excellent score, 1.00 a bad score.

ESG Rating	A	A-	B+	B	B-	C+	C	C-	D+	D	D-
Min score	3.50	3.25	3.00	2.75	2.50	2.25	2.00	1.75	1.50	1.25	1.00

Issuers excluded from the investment universe in application of normative and sectorial exclusions and after excluding securities whose issuers are rated D-:

Number of excluded issuers	% in the index
10	4.08%

ENVIRONMENTAL RATING FOR ENERGY, UTILITIES, AUTOMOTIVE, AND CHEMICALS

Sectors	Fund		Fund index	
	% NAV	Rating	%	Rating
Energy	0.46%	C+	2.36%	C+
Utilities	2.14%	B	4.14%	B-
Automotive	11.36%	C	12.25%	C
Chemicals	3.77%	C+	4.69%	C

The fund applies specific constraints on four sectors with high energy consumption: energy, utilities, automotive, and chemicals.

The average environmental grade per sector of the portfolio needs to be superior to the average environmental grade of the same sector in the benchmark index of the fund.

The portfolio may not be invested in any of the four sectors.

The Environmental Rating of these four sectors is mainly weighted by the following criteria:

- energy: scope 1 of greenhouse gas emissions associated with the issuer's activities, the issuer's policies to preserve air quality, the issuer's wastewater treatment.
- utilities: the energy sources used by the issuer, the percentage of renewable energy used by the issuer, the issuer's water use efficiency.
- automotive: the energy efficiency of the products manufactured by the issuer, the rate of reprocessing of waste associated with the issuer's industrial production, the percentage of vehicles with a low environmental impact produced by the issuer.
- chemicals: the issuer's greenhouse gas emissions, the issuer's greenhouse gas reduction policy and strategy.

Characteristics

ISIN CODE

C EUR share	FR0010853556
C CHF hedged share	FR0011341171
C USD hedged share	FR0011929728

BLOOMBERG CODE

C EUR share	SCOEUHY FP Equity
C CHF hedged share	SCOEUHC FP Equity
C USD hedged share	SCOEUHU FP Equity

FUND NAME

SCOR SUSTAINABLE EURO HIGH YIELD

LEGAL FORM

French FCP, under the Directive 2009/65/EC

SFDR CLASSIFICATION

Article 8

INCEPTION DATE

C EUR share	14/04/2010
C CHF hedged share	12/10/2012
C USD hedged share	06/06/2014

FUND CURRENCY

EUR

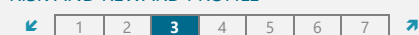
RECOMMENDED INVESTMENT HORIZON

3 years minimum

INDEX

Bloomberg Euro High Yield 3% Issuer Constraint ex Financial TR Unhedged (Bloomberg code: I20845EU Index)

RISK AND REWARD PROFILE



↩ For a lower risk, typically lower rewards
 ↪ For a higher risk, typically higher rewards

VALUATION FREQUENCY

Daily (D)

SWING PRICING

Swing Pricing mechanism effective as of April 16, 2020

SETTLEMENT AND DELIVERY

D+2 / D+2

ONGOING CHARGES

0.50% VAT incl. (for the year 2020)

PERFORMANCE FEES

None (since January 1st, 2016)

SUBSCRIPTION / REDEMPTION FEES

Maximum 3.00% / none

CUSTODIAN

BNP Paribas Securities Services S.C.A.

DELEGATED ACCOUNTING MANAGEMENT

European Fund Administration S.A. – France

COUNTRIES OF COMMERCIALIZATION

AT, BE, CH, DE, DK, ES, FI, FR, IT, LU, MC*, NL, NO, PT, SE, UK

*Only with approved local entities

Market review

The Euro High Yield market posted a positive performance of +0.23% in March 2022, but was down -4.09% in the first quarter of 2022. The market finished the first quarter on a positive note, following mention of a cease-fire between Ukraine and Russia in early March. Spreads retraced more than half the increase from their widest point. The average OAS vs sovereign debt thus narrowed by 100 bps after the peak to 386 bps at end-March, representing an increase of 85 bps during the first quarter. As a result, the credit component posted a negative performance of -1.45%, with the sudden rise in interest rates during the period accounting for nearly two-thirds thereof. The most recent eurozone and US inflation figures took central banks by surprise and prompted them to tighten the monetary screws, which accentuated the sell-off on interest rates.

The primary market remained listless until end-March. Only EUR 12 billion have been issued since the start of the year, down -65% compared with the year-earlier period, and they were concentrated in January. Crossover issuers Cellnex and TVO constituted the rare high-yield issues in March. Uncharacteristically, they issued short-maturity bonds. The list of expected issues is growing. The lack of opportunity on new issues is continuing to support the high-yield market, and there were some inflows into funds at the end of March. Cash remained substantial, however, as funds sought to avoid forced sales in a relatively illiquid market. Outflows amounted to EUR 4 billion during the first quarter.

The default rate in Europe increased for the first time in 10 months to 0.7%, according to JP Morgan, and related only to small notionals, with a recovery rate still well in excess of the long-term average. Even though spreads widened until early March, the proportion of distressed debt and the dispersion of spreads within the high-yield category remained low. This is because rising interest rates were the principal contributor to negative performance, and the technical factors supporting the market prompted investors to cap yields, causing spreads to narrow during the month. The rise in raw material and energy prices and the shortages expected as a result of new lockdowns in China sparked fears of a slowdown in economic activity, but did not seem to have had much impact on spreads, except for the airline and automotive sectors. These again performed negatively in March. As these risks come into focus, they are starting to have an impact on the most directly-affected sectors, such as packaging. Two packaging industry issuers have had to temporarily close certain production facilities to avoid operating at a loss. Nevertheless, fourth-quarter earnings publications were mostly positive, particularly for the companies least affected by the market tension (e.g. gaming and luxury retail).

Fund manager's comment

The SCOR Sustainable Euro High Yield fund posted a positive performance of +0.10% in March 2022 (C EUR share), lagging -0.13% behind its index, but was down -4.02% in the first quarter (+0.07% ahead of the index).

The fund's underweighting on B rated issued penalized the fund on a relative basis. B rated issues outperformed BBs and CCCs and are now even dearer on a relative basis, which backs up our positioning.

The fund is overweight on certain packaging industry issuers that underperformed significantly because certain production facilities were temporarily halted. This explained most of the fund's underperformance vs. the index. Conversely, the fund benefited from its overweighting in the gaming sector, which is performing well in the current context.

The fund also benefited from the recovery in corporate hybrids, via its overweighting on that asset class and in particular on EDF and Telefonica. The best performance among hybrids and the strongest relative contribution came from two new Bayer issues in which the fund invested. They show favorable ESG ratings and were issued at a significant discount against the secondary yield curve.

Because the fund's ESG positioning excludes fossil fuel and tobacco companies, the fund was not exposed to Wintershall, involved in the NordStream 2 project, to UGI, an oil and gas transporter, nor to BAT hybrids, which were among the most negative performers during the first quarter.

The fund's beta decreased during the month and moved closer to 1. The rare high-yield issues in March included the new Cellnex issue, in which the fund invested because of the level at which it was issued and the short-term maturity. The fund did not take part in TVO, however, which was issued with no discount. The fund lightened its holdings in Fnac 2026 and Golden Goose 2027, which are in cyclical consumer goods and have relatively low ESG ratings, and in Loxam senior 2024, which is at the top of the cycle and might be impacted by future raw material shortages. The fund sold off its holding in Playtech 2026, which is involved in Ukraine. The reduction of the fund's beta will continue, in particular by reducing its holding of issues that are the most heavily impacted by rising raw material prices.

Available Shares

NET ASSET VALUE PER UNIT

C EUR share	EUR 1,930.96
C CHF hedged share	CHF 1,453.31
C USD hedged share	USD 1,388.93
IC EUR share	EUR 975.76

BLOOMBERG CODE

C EUR share	SCOEUHY FP Equity
C CHF hedged share	SCOEUHC FP Equity
C USD hedged share	SCOEUHU FP Equity
IC EUR share	SCEHYIC FP Equity

ISIN CODE

C EUR share	FR0010853556
C CHF hedged share	FR0011341171
C USD hedged share	FR0011929728
IC EUR share	FR0013146339

INCEPTION DATE

C EUR share	14/04/2010
C CHF hedged share	12/10/2012
C USD hedged share	06/06/2014
IC EUR share	08/04/2021

APPLICABLE MANAGEMENT FEES

C shares: 0,50% p.a.
IC shares: 0,50% p.a.

Cumulative performance

	YTD	1 month	3 months	1 year	3 years	inception*
C EUR share	-4.02%	+0.10%	-4.02%	-2.01%	+8.79%	+93.10%
C CHF hedged share	-4.15%	+0.04%	-4.15%	-2.33%	+7.55%	+45.33%
C USD hedged share	-3.74%	+0.24%	-3.74%	-1.23%	+13.62%	+38.89%
IC EUR share	-4.02%	+0.10%	-4.02%	-	-	-2.42%

Calendar performance

	YTD 2022	2021	2020	2019	2018	2017
C EUR share	-4.02%	+3.60%	+4.86%	+8.85%	-3.12%	+5.08%
C CHF hedged share	-4.15%	+3.18%	+4.33%	+8.45%	-3.73%	+4.62%
C USD hedged share	-3.74%	+4.29%	+6.42%	+9.16%	-0.44%	+7.15%
IC EUR share	-4.02%	+1.66%*	-	-	-	-

Annualized performance

	3 years	5 years	10 years	inception*
C EUR share	+2.84%	+2.68%	+4.93%	+5.65%
C CHF hedged share	+2.45%	+2.24%	-	+3.17%
C USD hedged share	+4.34%	+4.11%	-	+4.29%
IC EUR share	-	-	-	-2.48%

*Since inception of the share class (refer to characteristics)

Performance is net of fees, includes dividends and is based on net asset values adjusted to swing pricing. Past performance is not a reliable indicator of future performance.

Disclaimer

This document is intended for professional investors as defined by MiFID.

This document is issued by SCOR Investment Partners SE, a management company governed by French law. It contains elements of information, opinions and statistical data that SCOR Investment Partners SE considered lawful and correct on the day they were written given the economic and financial environment at the time. However, SCOR Investment Partners SE does not and will not guarantee the accuracy and completeness of any such information, opinions and statistical data. This document is therefore likely to evolve. This document is provided for information purposes only and should not be construed as an offer to sell or limit, or as investment advice. It is not the basis of a contract or commitment of any nature whatsoever and does not assume any responsibility for SCOR Investment Partners SE. This document is provided to you without us having a precise knowledge of your risk profile. Before making any investment decision, you should read the Key investor information document (KIID) and the Prospectus of the Fund available from SCOR Investment Partners SE - Sales & Marketing Department. The risks, costs and minimum recommended investment period associated with investing in the Funds are described in the Fund Prospectus. Before making any investment decision, you should make sure that this Fund is consistent with your investment goals and your legal and regulatory constraints. The figures refer to the past and past performance is not a reliable indicator of future performance. The management company holds at the client disposal the details regarding the costs and fees. This document is provided on a confidential basis and cannot be used, reproduced, distributed or transmitted without the prior written consent of SCOR Investment Partners SE.

Source: SCOR Investment Partners, unless otherwise specified.

In Switzerland, subscriptions or purchases, and sales or transfers of units or shares in a fund are restricted to Qualified Investors only, as per Collective Investment Scheme Act ("CISA"), article 10 paragraph 3. In Switzerland, the Fund Prospectus, the Management Regulations, the Key investor information document (KIID), if need be, as well as annual or semi-annual reports are available free of costs, upon request at the Swiss Representative : BNP Paribas Securities Services, Paris, Zurich Branch, Selnaustrasse 16, 8022 Zurich. Payment Service in Switzerland: BNP Paribas Securities Services, Paris, Zurich Branch.

Main risk factors

Risk of capital loss: There is a risk that the capital initially invested will not be fully recovered on redemption.

Risk linked to discretionary management: The management style is discretionary, which means that the portfolio management company may move away from the composition of the benchmark in accordance with its beliefs concerning issuers or its market anticipations. There is a risk that the Fund will not be invested at all times in the best performing securities and that the Fund's performance will differ significantly from that of the benchmark.

Risk linked to the ESG approach: The consideration of the ESG approach, and more specifically the inclusion of exclusions in the investment selection process, may create a performance bias in relation to the performance of the Fund's Benchmark Index.

Furthermore, the ESG approach is based, on the one hand, on data provided by the ESG data provider selected by the management company and, on the other hand, on an internal analysis of the information provided by issuers that the management company considers to be well-founded or accurate on the day of their establishment.

It should be noted that the SRI strategies of the funds selected (excluding funds managed by the management company) may vary and may not be fully consistent with each other (use of different ESG indicators and/or SRI approaches). Despite this, the Fund does not benefit from the SRI label.

Interest rate risk: Since the portfolio is principally invested in fixed rate securities, Fund unitholders are exposed to interest rate risk. This corresponds to the risk of a fall in value of rate instruments due to interest rate variations and is measured by interest rate sensitivity. In periods of increased interest rates, the net asset value of the Fund may decrease significantly.

Credit risk: Deterioration in the solvency of an issuer may provoke a fall in the value of the securities that it has issued, and subsequently in the net asset value of the Fund. This risk is measured by credit sensitivity. In the event of default on payment, the value of the securities may be zero.

Risk linked to speculative securities: Due to the historically greater risk of default on speculative securities than on non-speculative securities, investment in high yield or non-rated securities may increase the credit risk and may lead to a significant and rapid fall in the net asset value of the Fund.

Emerging market risk: Due to the historically greater risk of default for non-OECD (emerging) securities than for OECD securities, investment in non-OECD (emerging) securities may increase the credit risk and may lead to a significant and rapid fall in the net asset value of the Fund.

Counterparty risk: This risk relates to the possibility of default by a counterparty, leading to payment default. Payment default by a counterparty may lead to a fall in the net asset value of the Fund.

Share market risk: The value of the Fund may fall in the event of a fall in the share market and/or a fall in value of specific securities held by the Fund.

Currency risk: For units denominated in CHF and USD, foreign exchange risk is residual because the units are hedged. The attention of unitholders is drawn to the residual exchange rate risk that would result from imperfect coverage. This risk may decrease the net asset value.

Refer to the fund latest prospectus for the comprehensive list of associated risks.