

## Key figures

### PERFORMANCE (C EUR SHARE)

MTD (Month to Date)	+0.97%
YTD (Year to Date)	+4.43%

### FUND SIZE

EUR 232.29m

### NET ASSET VALUE PER UNIT

C EUR share	EUR 1,379.76
C CHF hedged share	CHF 1,202.92
C USD hedged share	USD 1,318.69

## Financial data

NUMBER OF LINES  
84

% MARKET EXPOSURE  
96.58%

AVERAGE EQUITY SENSITIVITY  
41.9% (fund) / 40.1% (index)

AVERAGE PREMIUM  
32.43%

AVERAGE COUPON  
0.33%

AVERAGE RATING <sup>1,2</sup>  
BBB+

AVERAGE MATURITY  
1.85 (fund) / 1.84 (index)

SCR  
22.20%

<sup>1</sup> includes only rated bonds

<sup>2</sup> Source: Bloomberg

MORNINGSTAR CATEGORY  
European Convertible Bonds



## Investment strategy and fund's objective

SCOR Convertible Europe is a French FCP invested in European convertible bonds. The fund's objective is to achieve a performance greater than or equal to the « Exane ECI Europe » index, less management costs, over the recommended investment period.

### Key points:

- a portfolio invested in convertible bonds issued by European and Swiss companies
- portfolio invested in bonds denominated mainly in EUR but also in USD, GBP, CHF, etc.
- so-called « synthetic » convertible bonds are excluded from the investment universe
- an active portfolio management to optimize the fund convexity

## NAV since inception (basis 1,000)



## Cumulative performance

	YTD	1 month	3 months	1 year	3 years	inception*
C EUR share	+4.43%	+0.97%	+4.28%	+4.43%	+9.00%	+37.98%
Index	+5.01%	+0.93%	+4.19%	+5.01%	+11.30%	+40.79%
C CHF hedged share	+3.99%	+0.94%	+4.20%	+3.99%	+6.85%	+20.29%
C USD hedged share	+5.90%	+1.07%	+4.57%	+5.90%	+16.81%	+31.87%

## Calendar performance

	YTD 2020	2019	2018	2017	2016	2015
C EUR share	+4.43%	+9.92%	-5.03%	+3.01%	-0.93%	+7.47%
Index	+5.01%	+11.44%	-4.89%	+3.53%	-0.41%	+7.60%
C CHF hedged share	+3.99%	+8.80%	-5.55%	+2.48%	-1.55%	+6.03%
C USD hedged share	+5.90%	+13.10%	-2.48%	+4.79%	+0.17%	+7.12%

## Annualized performance

	3 years	5 years	inception*
C EUR share	+2.91%	+2.15%	+4.10%
Index	+3.62%	+2.79%	+4.36%
C CHF hedged share	+2.23%	+1.51%	+2.66%
C USD hedged share	+5.30%	+4.16%	+4.30%

index = Exane ECI Europe (Bloomberg Code: EECIEECI Index)

\* Since inception of the share class (refer to Characteristics)

Performance is net of fees. Past performance is not a reliable indicator of future performance.

## Contact

### SALES TEAM

Phone: +33 1 58 44 70 00

scorip.sales@scor.com

www.scor-ip.com

### SCOR INVESTMENT PARTNERS

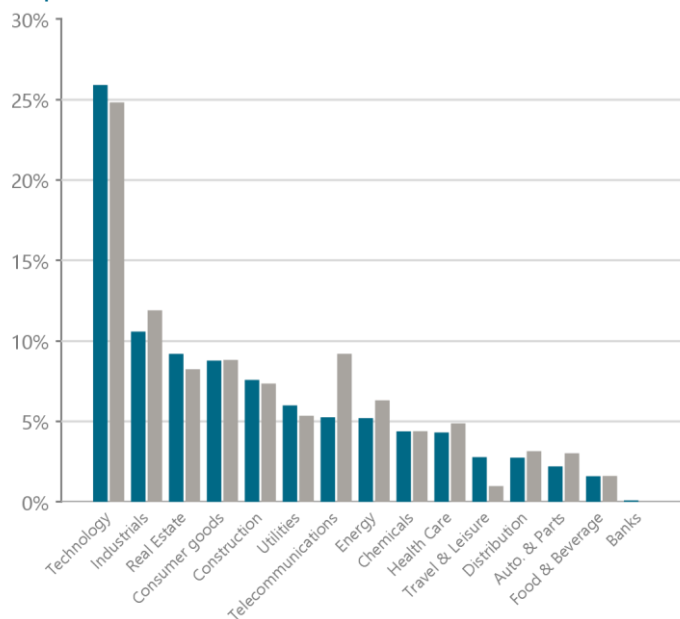
5, avenue Kléber

75795 Paris Cedex 16

# SCOR CONVERTIBLE EUROPE

Monthly report – December 31, 2020

## Top 15 sectors <sup>3,4</sup>



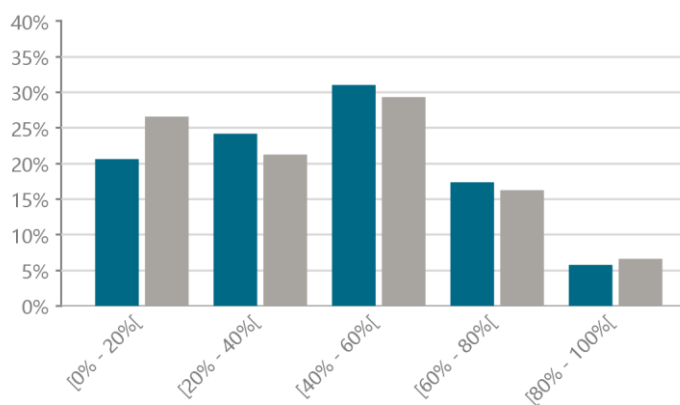
## 5 largest over/underexposures <sup>4</sup>

ISSUER	SECTOR	OVER EXPOSURE
ELECTRICITE DE FRANCE	Utilities	0.72%
SILICON ON INSULATOR	Technology	0.70%
ACCOR SA	Travel & Leisure	0.69%
SCHNEIDER ELECTRIC SE	Industrials	0.66%
AIR FRANCE-KLM	Travel & Leisure	0.62%

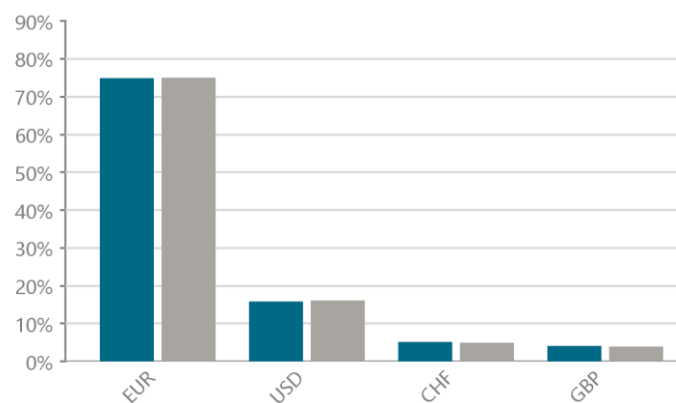
  

ISSUER	SECTOR	UNDER EXPOSURE
TELECOM ITALIA	Telecommunications	-4.21%
AIRBUS SE	Industrials	-1.25%
FRESENIUS SE & CO KGA	Health Care	-1.03%
CARREFOUR SA	Distribution	-0.98%
VALEO SA	Auto. & Parts	-0.98%

## Delta distribution <sup>3,5</sup>



## Breakdown by currency <sup>3,5</sup>



## Risk indicators

### VOLATILITY

YEAR	FUND	INDEX	TRACKING ERROR	INFORMATION RATIO	BETA
Since inception	6.13%	5.76%	1.15%	-0.23	1.05
2020	7.61%	7.92%	0.84%	-0.70	0.98
2019	3.74%	3.83%	0.53%	-2.88	0.98
2018	5.34%	5.22%	1.11%	-0.13	1.03
2017	4.12%	3.86%	0.73%	-0.71	1.04
2016	7.14%	6.66%	1.03%	-0.51	1.04
2015	8.54%	7.75%	1.55%	-0.08	1.07
2014	5.44%	4.72%	1.13%	0.30	1.12

<sup>3</sup> % of the AuM

<sup>4</sup> Exane sectors

<sup>5</sup> Cash & equivalent included

■ Fund  
■ index = Exane ECI Europe (Bloomberg Code: EECIECI Index)

## Characteristics

### ISIN CODE

C EUR share	FR0011368430
C CHF hedged share	FR0011668037
C USD hedged share	FR0011929702

### BLOOMBERG CODE

C EUR share	SCORCEC FP Equity
C CHF hedged share	SCORCEH FP Equity
C USD hedged share	SCORCEU FP Equity

### FUND NAME

SCOR CONVERTIBLE EUROPE

### LEGAL FORM

French FCP, under the Directive 2009/65/CE

### INCEPTION DATE

C EUR share	27/12/2012
C CHF hedged share	20/12/2013
C USD hedged share	06/06/2014

### FUND CURRENCY

EUR

### RECOMMENDED INVESTMENT HORIZON

3 years minimum

### INDEX

Exane ECI Europe (Bloomberg Code: EECIECI Index)

### RISK AND REWARD PROFILE

↩	1	2	3	4	5	6	7	↗
---	---	---	---	---	---	---	---	---

↩ For a lower risk, typically lower rewards  
↗ For a higher risk, typically higher rewards

### VALUATION FREQUENCY

Daily (D)

### SUBSCRIPTION / REDEMPTION

Orders received each D day before 12:00 a.m. (Paris time), executed on NAV D day

### SETTLEMENT AND DELIVERY

D+2

### ONGOING CHARGES

0.50% VAT incl. (for the year 2019)

### PERFORMANCE FEES

None (since January 1st, 2016)

### SUBSCRIPTION / REDEMPTION FEES

Maximum 3.00% / none

### CUSTODIAN

BNP Paribas Securities Services S.C.A.

### DELEGATED ACCOUNTING MANAGEMENT

European Fund Administration S.A. – France

### COUNTRIES OF COMMERCIALIZATION

BE, CH, FR, IT, LU, MC\*, NL

\*Only with approved local entities

## Market review

The year 2020 was characterized by continuous uncertainty deriving from the public health crisis, a worldwide economy in the doldrums and massive injections of liquidity into the financial markets.

Volatility was high throughout the year, and convertible bonds (Exane ECI Europe index) posted an increase of +5.0%, while high yield (Barclays Pan-European HY) and investment grade bonds (Barclays Euro Aggregate) advanced by only +2.3% and +3.0%, respectively. Conversely, the Stoxx 600 and Eurostoxx 50 indices declined by -1.4% and -2.6%, respectively.

The uptick in equities was moderate during December 2020, as Brexit negotiations stumbled forward in the first part of the month and a new variant of the Covid-19 virus appeared in the UK. However, fears connected with the new variant were quickly dissipated when the WHO and pharmaceutical companies reaffirmed the effectiveness of the vaccines.

During December 2020, convertible bonds (Exane ECI Europe) advanced by +0.9%. The Stoxx 600 Europe and the Eurostoxx 50 gained +2.6% and +1.8%, respectively. In the United States, the S&P 500 rose +3.8% and the Nasdaq Composite +5.8%.

From a sectoral point of view, cyclicals outperformed during December 2020 (basic resources, tourism, consumer products), as did the automotive and technology sectors.

The European primary market was once again active in December 2020, with a volume of new issues (at par value) not seen since 2003. Four issuers came to the convertible bond market for financing or refinancing in December 2020: Pirelli, IWG (UK specialist in flexible workspaces), Mithra (development of pharmaceuticals for contraception and fertility) and Qiagen. At the same time, Qiagen repaid the convertible bond due to mature in March 2021.

## Fund manager's comment

The SCOR Convertible Europe fund returned a performance of +1.00% in December 2020 (C EUR shares), vs. a rise of +0.90% for the benchmark index.

The fund benefited from its exposure to HelloFresh and Soitec, and to the recent Accor and Lufthansa issues.

Conversely, exposure to GM Store Nord and the new Ams convertible held back performance.

Overall of 2020, the fund rose by +4.40%. DeliveryHero and HelloFresh were the largest contributors to the rise, while Korian constituted the principal negative contributor.

### FUND MANAGERS

ALEXANDRE STOESSEL  
SONIA BERREJEB

## Disclaimer

This document is intended for professional investors as defined by MiFID.

This document is issued by SCOR Investment Partners SE, a management company governed by French law. It contains elements of information, opinions and statistical data that SCOR Investment Partners SE considered lawful and correct on the day they were written given the economic and financial environment at the time. However, SCOR Investment Partners SE does not and will not guarantee the accuracy and completeness of any such information, opinions and statistical data. This document is therefore likely to evolve. This document is provided for information purposes only and should not be construed as an offer to sell or limit, or as investment advice. It is not the basis of a contract or commitment of any nature whatsoever and does not assume any responsibility for SCOR Investment Partners SE. This document is provided to you without us having a precise knowledge of your risk profile. Before making any investment decision, you should read the Key investor information document (KIID) and the Prospectus of the Fund available from SCOR Investment Partners SE - Sales & Marketing Department. The risks, costs and minimum recommended investment period associated with investing in the Funds are described in the Fund Prospectus. Before making any investment decision, you should make sure that this Fund is consistent with your investment goals and your legal and regulatory constraints. The figures refer to the past and past performance is not a reliable indicator of future performance. The management company holds at the client disposal the details regarding the costs and fees. This document is provided on a confidential basis and cannot be used, reproduced, distributed or transmitted without the prior written consent of SCOR Investment Partners SE.

Source: SCOR Investment Partners, unless otherwise specified.

In Switzerland, subscriptions or purchases, and sales or transfers of units or shares in a fund are restricted to Qualified Investors only, as per Collective Investment Scheme Act ("CISA"), article 10 paragraph 3. In Switzerland, the Fund Prospectus, the Management Regulations, the Key investor information document (KIID), if need be, as well as annual or semi-annual reports are available free of costs, upon request at the Swiss Representative : BNP Paribas Securities Services, Paris, Zurich Branch, Selnaustrasse 16, 8022 Zurich. Payment Service in Switzerland: BNP Paribas Securities Services, Paris, Zurich Branch.

## Main risk factors

**Risk of capital loss:** There is a risk that the capital initially invested will not be fully recovered on redemption.

**Risk linked to discretionary management:** The management style is discretionary, which means that the portfolio management company may move away from the composition of the benchmark index in accordance with its beliefs concerning issuers or its market anticipations. There is a risk that the Fund will not be invested at all times in the best performing securities and that the Fund's performance will differ significantly from that of the benchmark index.

**Risk linked to holding convertible bonds:** The value of convertible bonds depends on several factors: level of interest rates, evolution of the price of underlying equity, evolution of the price of derivatives embedded in convertible bonds. These various elements may lead to a fall in the net asset value of the Fund.

**Equity risk:** The value of underlying equities depends on the intrinsic qualities of the company, which may evolve significantly over time. The value of the Fund may fall in the event of a fall in the share market and/or in the event of a fall in the underlying securities or in the specific securities held by the Fund.

**Liquidity risk:** In the specific event that trade volumes on the financial markets are very low, any purchase or disposal on these markets may lead to significant market variations, particularly on convertible bonds with low nominal amounts or small to mid-cap equities.

**Interest rate risk:** since the portfolio is mainly invested in fixed-rate securities, Fund unitholders are exposed to interest rate risk. This corresponds to the risk of a fall in value of rate instruments due to interest rate variations. It is measured by the sensitivity of interest rates. In periods of increased interest rates, the net asset value of the Fund may decrease significantly.

**Credit risk:** deterioration in the solvency of an issuer may provoke a fall in the value of the securities that it has issued, and subsequently in the net asset value of the Fund. It is measured by credit sensitivity. In the event of default on payment, the value of the securities may be zero.

**Overexposure risk:** The Fund may need to invest in derivatives in order to generate equity overexposure, so that the Fund's exposure is higher than its net assets. Depending on the trend of the Fund's transactions, the downward movement (in the event of exposure purchase) or upward movement (in the event of exposure disposal) of the underlying assets of the derivative may be amplified, thus increasing the fall in the net asset value of the Fund.

**Counterparty risk:** This risk relates to the possibility of default by a counterparty, leading to payment default. Payment default by a counterparty may lead to a fall in the net asset value of the Fund.

**Emerging market risk:** The Fund may be exposed to emerging markets. Emerging markets are stock markets with liquidity and security features that do not always meet the usual standards of the major international markets. Moreover, these countries present a high risk of expropriation, nationalisation and social, political and economic instability.

**Currency risk:** There is an exchange rate risk due to the fact that the Fund holds shares or UCITS denominated in a currency other than USD. The variation of the dollar compared to another currency may have a negative impact on the net asset value of the Fund. Up to 100% of the net assets of the fund may be exposed to exchange rate risk. Hedged euro-denominated units have only a residual EUR/USD exchange rate risk exposure compared to USD units, but they are exposed to the changes of the short-term rate differential USD/EUR. Non-hedged euro-denominated units have a complete EUR/USD exchange rate risk exposure compared to USD units. This exposure can cause decreases of the net asset value.

Refer to the Fund latest prospectus for the comprehensive list of associated risks.